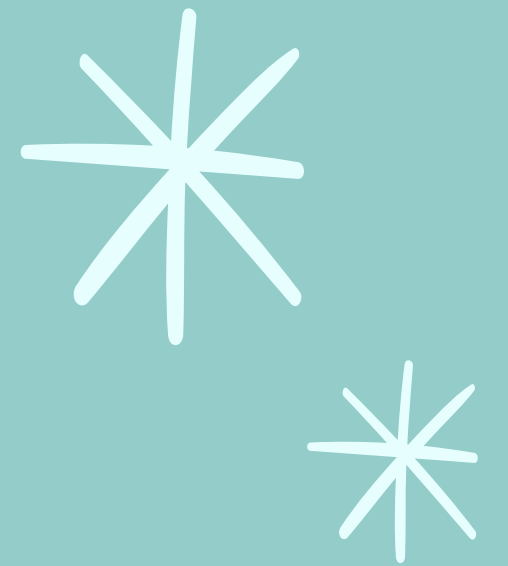
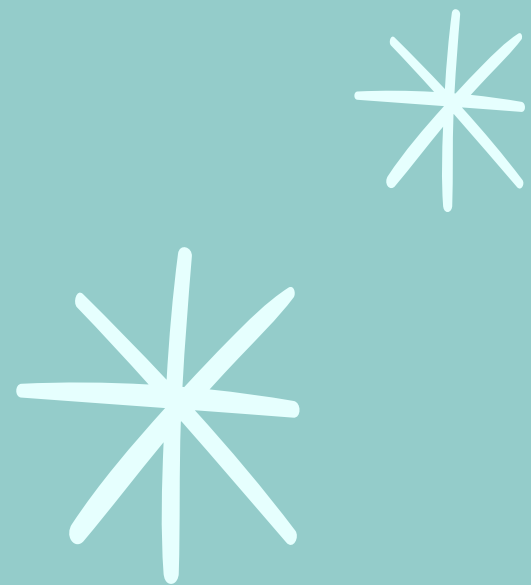
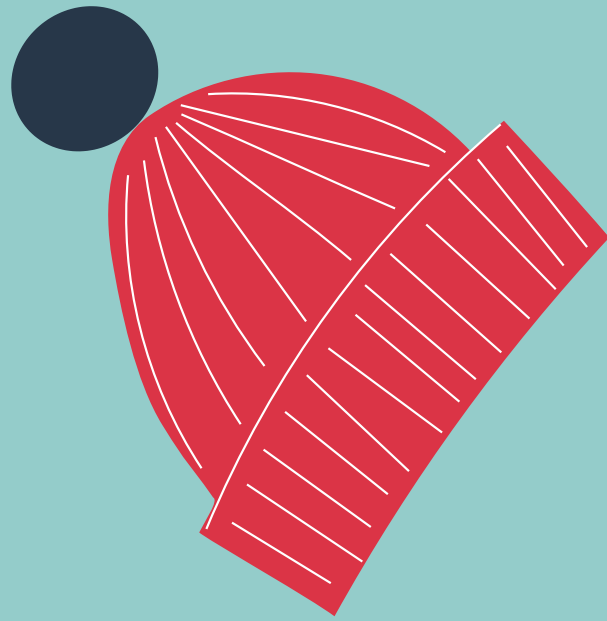


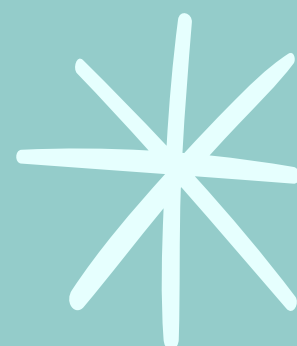
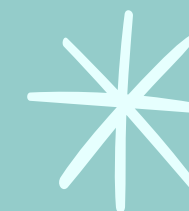
SHPE Winter Kickoff



Check In:



MemberSHPE:





Important Info

Group Me



Linktree



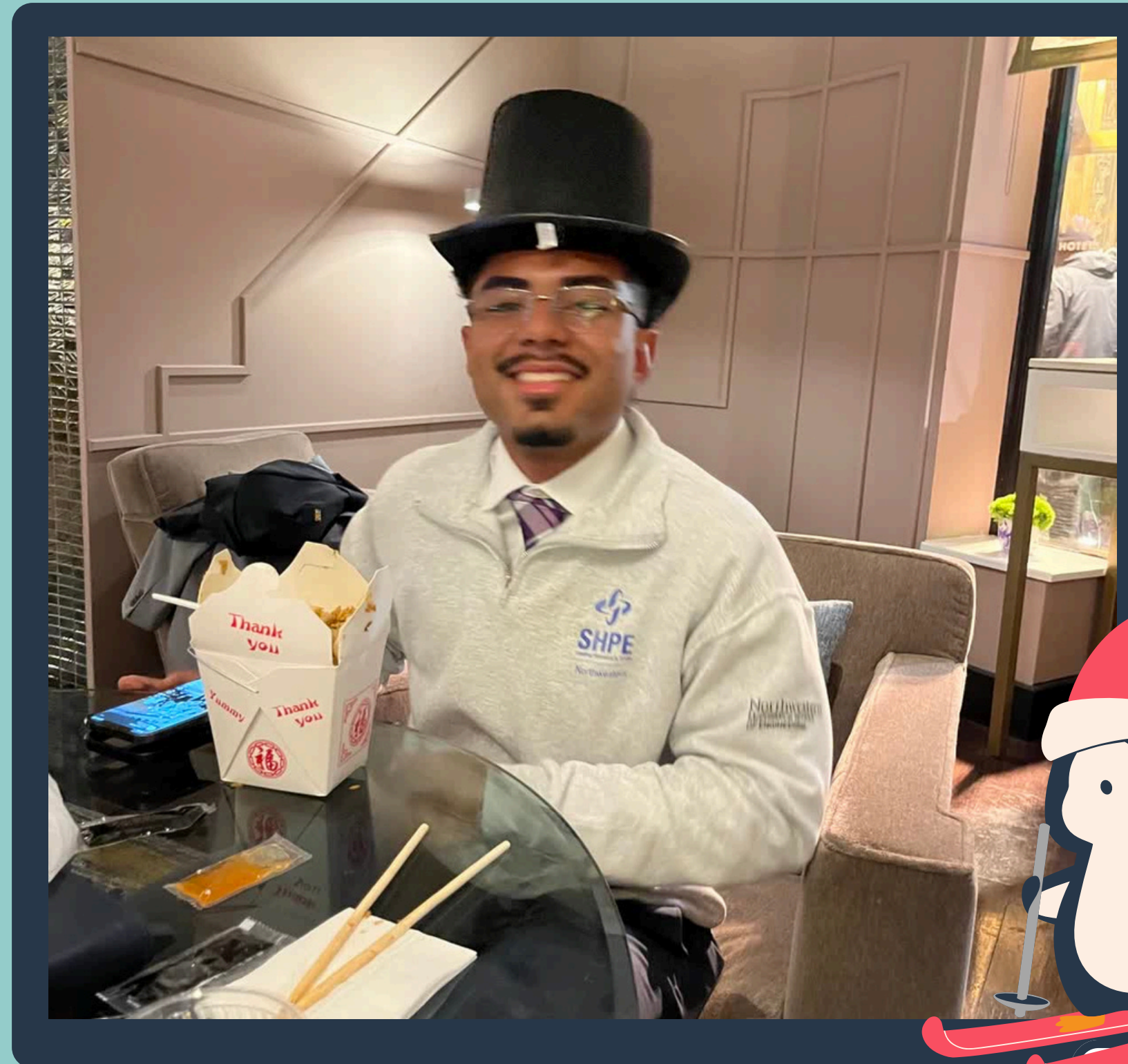
Email List



**Meet the
Exec!**



President: Ricardo Olmos | MechE



What is your New Year's Resolution?

Internal VP: Melany Gonzalez | CS



What is your New Year's Resolution?

External VP: Meadow Wales | BME



What is your New Year's Resolution?

Secretary: Cassandra Marquez | EnvE



What is your New Year's Resolution?

Treasurer: Diego Figueroa | EE



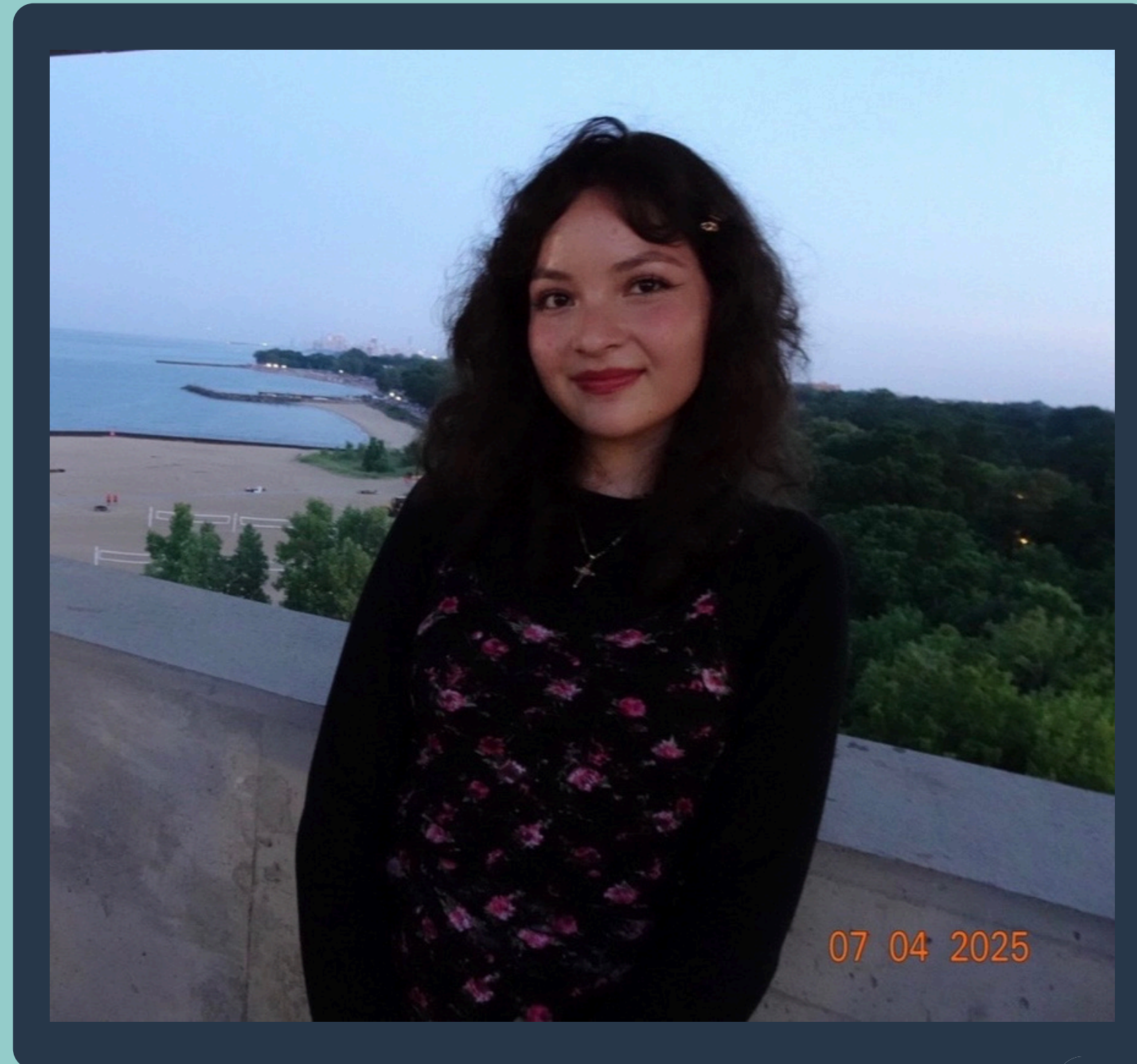
What is your New Year's Resolution?

Co-Chapter Liaison: Jose Flores | ChemE



What is your New Year's Resolution?

Co-Chapter Liaison: Diana Landa | BME



What is your New Year's Resolution?

Co-Community Outreach Director: Diego Oliva | BME



What is your New Year's Resolution?

Co-Community Outreach Director: Aracely Arambula | CS



What is your New Year's Resolution?

Co-MemberSHPE Director: Sofia Flores | MechE



What is your New Year's Resolution?

Co-MemberSHPE Director: Jonathan Gutierrez | MechE



What is your New Year's Resolution?

Professional Liaison: Jacqueline Martinez | Neuroscience



What is your New Year's Resolution?

Financial Director: Paulina Jimenez-Gonzalez | MechE



What is your New Year's Resolution?

SHPEtina Director: Gabriela Hernandez | BME



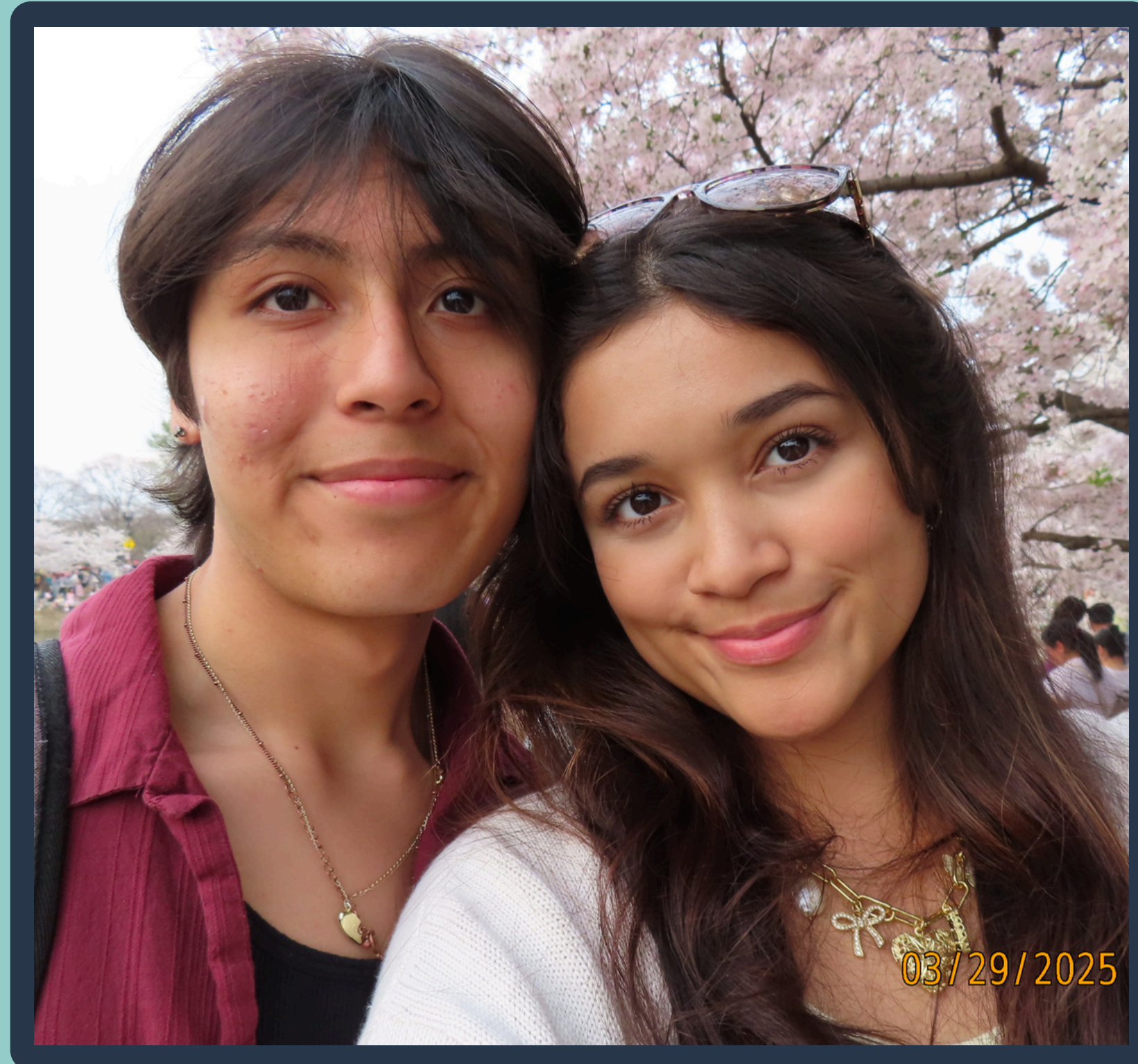
What is your New Year's Resolution?

Marketing Director: Marissa Rocha Rangel | CS



What is your New Year's Resolution?

Webmaster: Diego Perez-Aguilar | CS



What is your New Year's Resolution?

SHPE History

- SHPE is a national organization founded in 1974 with the mission "SHPE changes lives by empowering the Hispanic/Latino community to realize its full potential and to impact the world through STEM awareness, access, support, and development."
- Northwestern has a student chapter of SHPE, part of Region VI, covering 9 states across the Midwest.
- Our SHPE chapter was founded in 1992 :)
- In 2023, NU's SHPE chapter received the National "Gold Chapter Award" for demonstrating excellence in SHPE's four core values: Familia, Service, Education, and Resilience!



Social + Cultural Activities



We host lots of different fun activities throughout the year for you all to enjoy :)

Some past ones include:

- STEM bonding with other STEM orgs
- Cookouts
- Slime night
- Paint & Sip
- Hide & Seek in Tech
- Spring Olympics with NSBE (volleyball, soccer, etc.)
- Jackbox night
- Karaoke
- and many more!



Professional Development



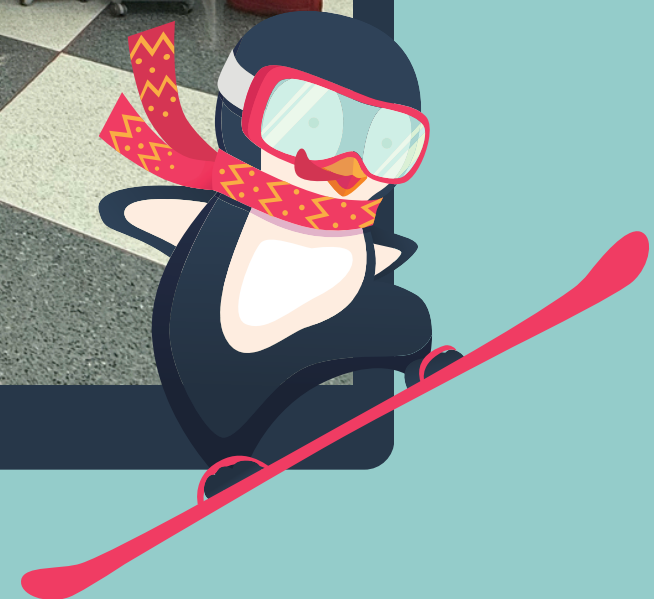
We bring in different companies and alums for you all to learn from their advice and experience!

Some past companies include:

- Accenture
- Google
- IBM
- Abbott
- Microsoft
- John Deere
- LinkedIn

We also host various events to help you all grow professionally with events:

- The SHPE National Convention – hosted every year where a bunch of different companies come; great way to network and potentially get an internship or job
- Seminar Series – This quarter we are a seminar series where we bring in different companies to prepare you for the recruitment process!



Community Outreach



We bring in different companies and alums for you all to learn from their advice and experience!

Some past companies include:

- Accenture
- Google
- IBM
- Abbott
- Microsoft
- John Deere
- LinkedIn

We also host various events to help you all grow professionally with events:

- The SHPE National Convention – hosted every year where a bunch of different companies come; great way to network and potentially get an internship or job
- Seminar Series – This quarter we are a seminar series where we bring in different companies to prepare you for the recruitment process!



Point System

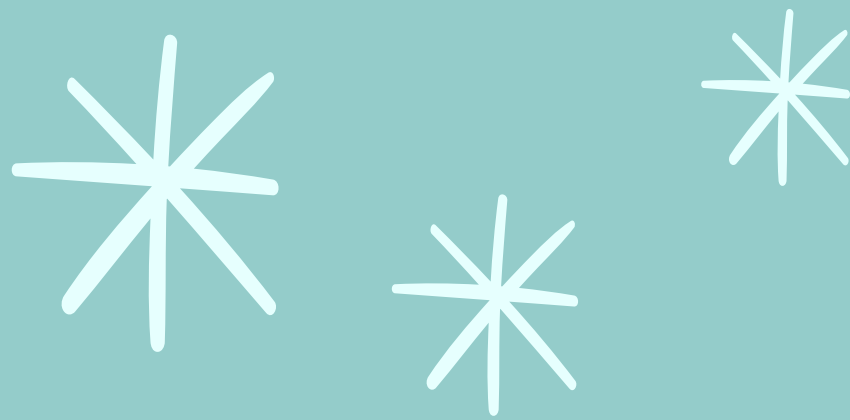
- General Meetings Check-In – 1 pt
- General Meetings Check-Out – 2 pts
- MentorSHPE Involvement – 1 pt
- Posting at an event on social media and tagging shpe_nu and shpe_region 6 – 1 pt
- SHPE Paid Membership – 2 pts
- Professional Events – 3 pts
- Regional Events – 4 pts
- Community Service Events/Volunteering – 5 pts





Raffle

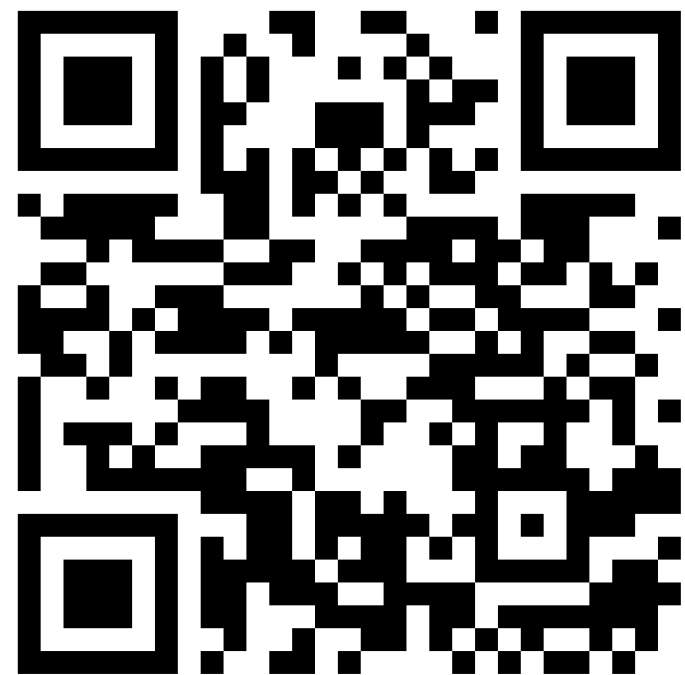




Women in STEM Summit:

Feb. 28, 2026

Interest Form



Instagram



LinkedIn



Future Events

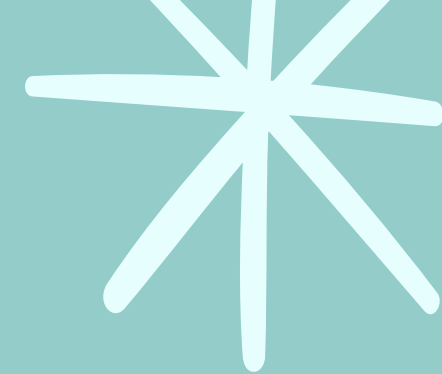
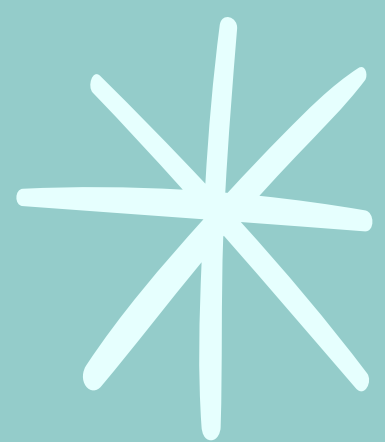
SHPetina!

BS/MS Panel Session

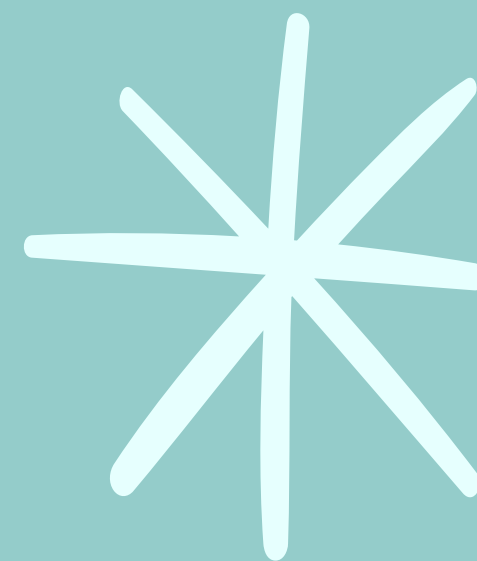
Financial Literacy Info Session

GM #2





Activity and Food!



Check Out:

